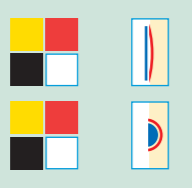




Suprasorb® – The team of moist wound management

The cleanser

Suprasorb® A Calcium Alginate Dressing



Depth of wound



recommended primary dressing with wound infection



recommended for degree of exudation



secondary dressing required



recommended combination



Please note:

In the case of infection:

an occlusive dressing is

used only when based on the

decision of a medical

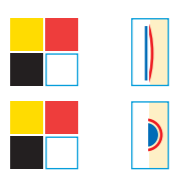
practitioner and after

examining the overall

situation

The cleanser antimicrobial

Suprasorb® A+Ag Calcium Alginate Dressing



Depth of wound



recommended primary dressing with wound infection



recommended for degree of exudation



secondary dressing required



recommended combination



Please note:

In the case of infection:

an occlusive dressing is

used only when based on the

decision of a medical

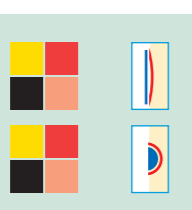
practitioner and after

examining the overall

situation

The intelligent one

Suprasorb® X HydroBalance Wound Dressing



Depth of wound



recommended primary dressing with wound infection



recommended for degree of exudation



secondary dressing required



recommended combination



Please note:

In the case of infection:

an occlusive dressing is

used only when based on the

decision of a medical

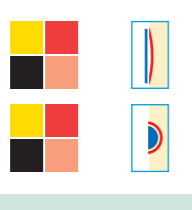
practitioner and after

examining the overall

situation

The intelligent one antimicrobial

Suprasorb® X+PHMB HydroBalance Wound Dressing



Depth of wound



recommended primary dressing with wound infection



recommended for degree of exudation



secondary dressing required



recommended combination



Please note:

In the case of infection:

an occlusive dressing is

used only when based on the

decision of a medical

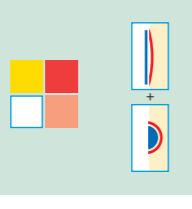
practitioner and after

examining the overall

situation

The active one

Suprasorb® G Collagen Wound Dressing



Depth of wound



recommended primary dressing with wound infection



recommended for degree of exudation



secondary dressing required



recommended combination



Please note:

In the case of infection:

an occlusive dressing is

used only when based on the

decision of a medical

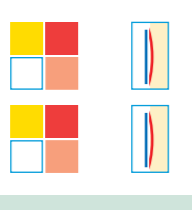
practitioner and after

examining the overall

situation

The easy one

Suprasorb® P PU Foam Dressing



Depth of wound



recommended primary dressing with wound infection



recommended for degree of exudation



secondary dressing required



recommended combination



Please note:

In the case of infection:

an occlusive dressing is

used only when based on the

decision of a medical

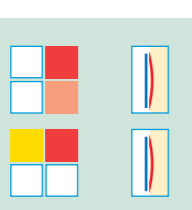
practitioner and after

examining the overall

situation

The multi-talent

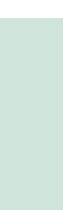
Suprasorb® H Hydrocolloid Dressing



Depth of wound



recommended primary dressing with wound infection



recommended for degree of exudation



secondary dressing required



recommended combination



Please note:

In the case of infection:

an occlusive dressing is

used only when based on the

decision of a medical

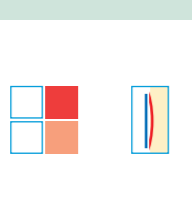
practitioner and after

examining the overall

situation

The flexible one

Suprasorb® M PU Membrane



Depth of wound



recommended primary dressing with wound infection



recommended for degree of exudation



secondary dressing required



recommended combination



Please note:

In the case of infection:

an occlusive dressing is

used only when based on the

decision of a medical

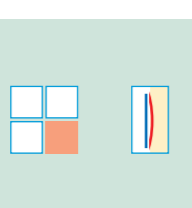
practitioner and after

examining the overall

situation

The transparent one

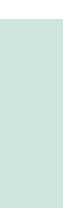
Suprasorb® F Film Wound Dressing



Depth of wound



recommended primary dressing with wound infection



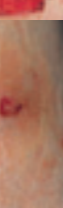
recommended for degree of exudation



secondary dressing required



recommended combination



Please note:

In the case of infection:

an occlusive dressing is

used only when based on the

decision of a medical

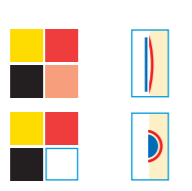
practitioner and after

examining the overall

situation

The moisturiser

Suprasorb® G Amor-phous Gel Dressings



Depth of wound



recommended primary dressing with wound infection



recommended for degree of exudation



secondary dressing required



recommended combination



Please note:

In the case of infection:

an occlusive dressing is

used only when based on the

decision of a medical

practitioner and after

examining the overall

situation

LOHMANN & RAUSCHER

Lohmann & Rauscher GmbH & Co. KG
P.O. Box 23 43
D-56513 Neuwied / Germany
Phone: +49 / 26 34 / 99-0
Fax: +49 / 26 34 / 99-64 67
E-Mail: info@de.LRmed.com
www.lohmann-rauscher.com

Lohmann & Rauscher GmbH
P.O. Box 222
A-1141 Vienna / Austria
Phone: +43 / 1 / 57 67 00
Fax: +43 / 1 / 5 77 17 99
E-Mail: info@at.LRmed.com
www.lohmann-rauscher.at

- A** Alginate
- A + Ag** Alginate
- X** HydroBalance
- X + PHMB** HydroBalance
- C** Collagen
- P** PU Foam
- H** Hydrocolloid
- M** PU Membrane
- F** Film
- G** Gel

LOHMANN & RAUSCHER



Suprasorb® The team of moist wound management.

Complete and professional!



9500199 0409 e/A



The right dressing for every wound.

- A** Alginate
- A + Ag** Alginate
- X** HydroBalance
- X + PHMB** HydroBalance
- C** Collagen
- P** PU Foam
- H** Hydrocolloid
- M** PU Membrane
- F** Film
- G** Gel

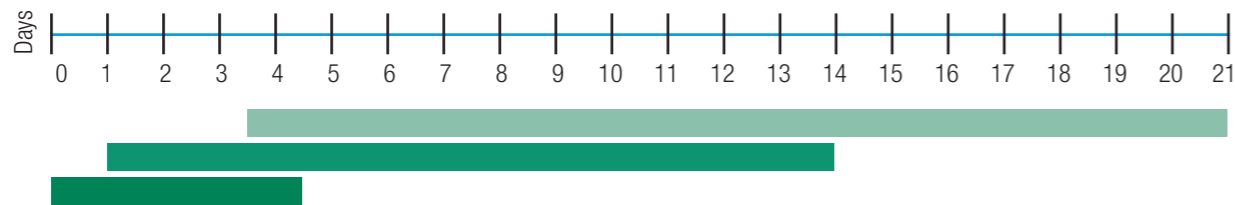
LOHMANN & RAUSCHER

Suprasorb® The team of moist wound management.

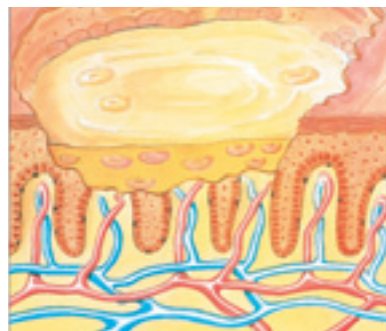


Multi-purpose dressings for a variety of wounds.

Physiological wound healing is a dynamic process that always follows the same complex pattern for every wound. There are three distinct, but overlapping phases, each one leading to the next and being dependent on one another.



1. Exudation phase



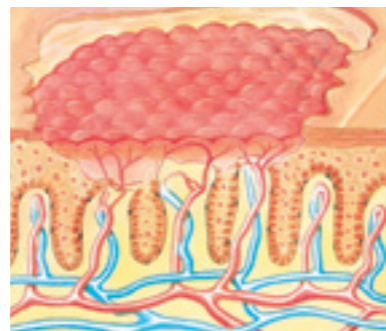
The exudation or cleansing phase commences immediately after the injury is sustained. In clinical terms, this presents as a local inflammation and leads on to pronounced exudation. During this phase the body initiates coagulation, cleanses the wound and wards off infection; damaged tissue and germs are removed (phagocytosis).

In the exudation phase, the optimal wound dressing, namely the moist wound management, stimulates the body's own cleansing process and thus creates clean wound conditions. Any coatings or necroses that are present are softened and removed; exudate, detritus and germs are absorbed by the dressing.

The moist dressing maintains the wound in ideally moist conditions and protects it from infection. This enables more rapid and better healing.

The frequency with which the moist dressing should be changed depends on the status of the wound and on exudation; it may be necessary to change the dressing several times per day. If required, necroses and (purulent) coatings are removed at the same time.

2. Granulation phase



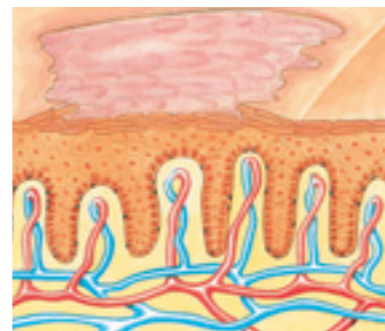
In the granulation or proliferation phase, new cells are generated and the granulation tissue is formed (a kind of temporary tissue for filling in the defect). There is increased migration of fibroblasts into the wound, collagen synthesis begins, and capillaries move into the centre of the wound. At the same time, the exudation decreases. The clinical presentation is now of reddish tissue with a good blood supply.

During the granulation phase, the moist wound dressing provides the best possible care to ensure an ideal moist wound environment. The wound is prevented from drying and surplus exudate is absorbed.

The moist wound dressing also keeps the wound safe from infection and mechanical influences and protects the new tissue.

The status of the wound determines how frequently the moist dressing should be changed during this phase. Experience shows that this first becomes necessary after several days. The moist wound dressing guarantees that the dressing can be changed without trauma - less pain for the patient and better healing.

3. Epithelialisation phase



In the epithelialisation or regeneration phase, the differentiation of tissue and epithelialisation develop further. The edges of the wound move in toward one another and the wound is gradually covered with epithelial tissue growing in from the edge. As the wound contracts and scar tissue is formed, the process of healing is concluded.

In the epithelialisation phase the moist wound management promotes the final healing and the development of new epithelium. The dressing maintains optimal moisture, protects from disturbing influences and ensures the wound is not disturbed.

The status of the wound determines how frequently the moist dressing should be changed during this phase. Since the exudation continues to decrease, the dressing can remain on the wound for up to 7 days. An advantage for users and patients.

The wound navigator

To make it easier to use dressings appropriate to the healing phase and thus to use them in the best possible way, wounds are assessed according to their appearance and classified into four different stages: necrotic, fibrin-coated, granulating and epithelialising. In routine practice the following colour codes are commonly used for these stages: **black, yellow, red and pink.**

The degree of exudation produced by the wound (heavy, moderate, light exudation) forms another important criterion for selecting the most suitable dressing. At the same time, attention must always be paid to the possibility of infection. A clinical infection is indicated by the classic symptoms: swelling, reddening, heat, pain and sometimes functional impairment.

These symptoms should not be confused with colonisation of the skin or wound with germs or contamination (minor colonisation of the wound with pathogenic germs, but without infection).

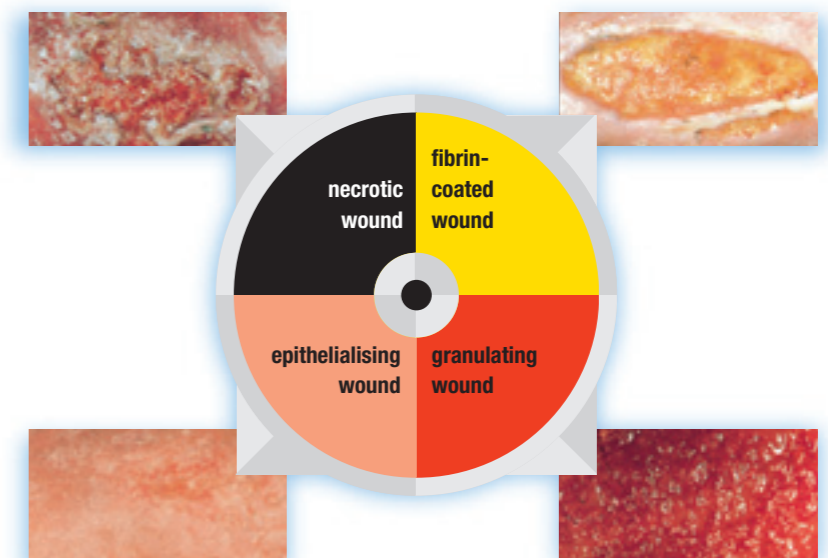
Moist wound management from L&R

The Suprasorb® team of moist wound management provides the correct, effective wound dressing for all wound phases, all levels of exudation and for both infected and non-infected wounds.

The moist wound dressings prevent the development of scabs. Scabs do indeed form a natural protection against mechanical influences, but also hinder wound healing since this must take place at a deeper layer under the scab. The moist wound environment supports healing and provides the ideal microclimate for the many processes taking place. The modern wound dressing also takes over essential functions performed by intact skin.

Atraumatic changes of the dressing ensure that the wound remains undisturbed, leading to quicker healing.

Besides medical advantages, the lower costs accrued over the whole treatment period also speak in favour of modern moist wound management - with dressings from L&R!



Suprasorb® – every wound professionally treated!

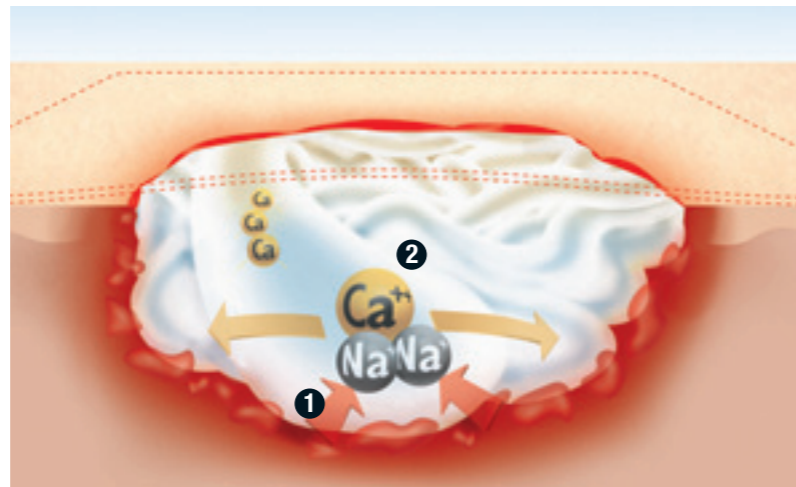
- Suprasorb® **A** Alginate
- Suprasorb® **A** + Ag Alginate for infected wounds
- Suprasorb® **X** HydroBalance
- Suprasorb® **X** + PHMB HydroBalance for infected wounds
- Suprasorb® **C** Collagen
- Suprasorb® **P** PU Foam dressing
- Suprasorb® **H** Hydrocolloid
- Suprasorb® **M** PU Membrane
- Suprasorb® **F** Film
- Suprasorb® **G** Gel



Suprasorb® A

Calcium Alginate Dressing

- 1 Surplus exudate from the wound is absorbed by the dressing.
- 2 Formation of gel through ion exchange.



Suprasorb® A Creates clean wound conditions naturally!

Suprasorb® A provides clean wound conditions in heavily exuding wounds. With the strong absorptive capacity of calcium alginate from natural brown algae.

The exchange of calcium ions from the wound dressing with the sodium ions from the wound exudate leads to a formation of gel which binds exudate and encloses bacteria as well as detritus, which are removed with the alginate fibres when the dressing is changed.

Indications:

Wounds in the exudation and granulation phase which are

- heavily exuding,
 - superficial and deep,
- for example
- pressure ulcers
 - ulcers of various origins (e.g. venous, arterial)
 - diabetic foot syndrome (DFS)
 - skin donor and skin grafting sites
 - postoperative wounds
 - second degree burns



Cleanses the wound rapidly and reliably.

Suprasorb® A shows its special benefits in use:

- a high capacity to absorb exudate
- rapid formation of gel
- soft and with excellent tamponing characteristics, conforms to every wound base
- binds bacteria into the gel and cleanses the wound

Suprasorb® A is available as dressing and as rope.

Interval between dressing changes

Depending on the degree of exudation and the secondary dressing used, at the latest after 5-7 days.

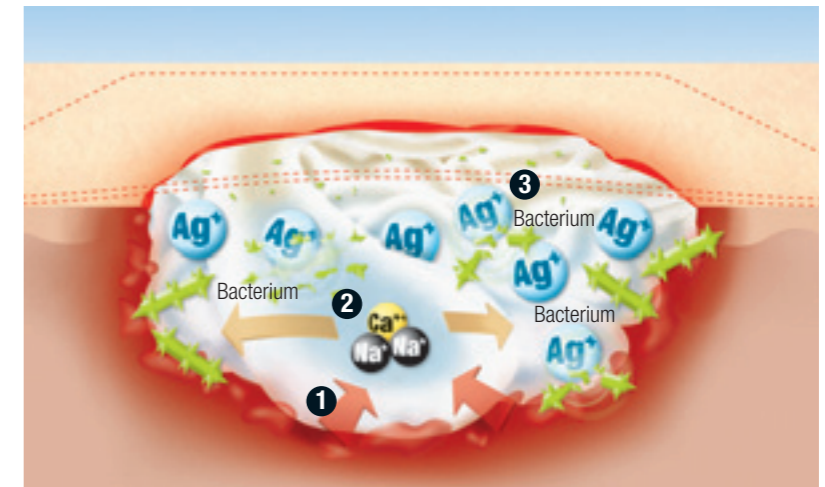


Suprasorb® A
The cleanser
among the wound dressings.

Suprasorb® A + Ag

Antimicrobial Calcium Alginate Dressing

- 1 Surplus exudate from the wound is absorbed by the dressing.
- 2 Formation of gel through ion exchange
- 3 Killing of bacteria by the silver ions that are released.



Suprasorb® A + Ag Provides clean wound conditions naturally and reduces bacteria!

Suprasorb® A + Ag provides clean wound conditions and reduction of bacteria in heavily exuding, infected wounds. With the strong absorptive capacity of natural calcium alginate and antimicrobial silver.

In its material characteristics, Suprasorb® A + Ag corresponds to the calcium alginate dressing Suprasorb® A. The silver ions that are released on contact with the wound exudate can exert their effect directly at the wound surface due to the production of gel by the alginate.

Indications:

Wounds in the exudation and granulation phase which are

- heavily exuding,
 - superficial and deep,
 - critically colonised or infected,
- for example
- pressure ulcers
 - ulcers of various origins (e.g. venous, arterial)
 - diabetic foot syndrome (DFS)
 - skin donor and skin grafting sites
 - postoperative wounds
 - second degree burns



Cleansing silver and natural absorptive capacity.

In use, Suprasorb® A + Ag shows not only the qualities of Suprasorb® A but additionally the benefits of the calcium alginate/ silver combination:

- wide antimicrobial spectrum
- can be used in clinically manifest infections
- also effective against MRSA and VRE
- bacteria and germs are enclosed within the gel and killed

Suprasorb® A + Ag is available as dressing and as rope.

Interval between dressing changes

Depending on the degree of infection, the degree of exudation and the secondary dressing used, at the latest after 5-7 days.

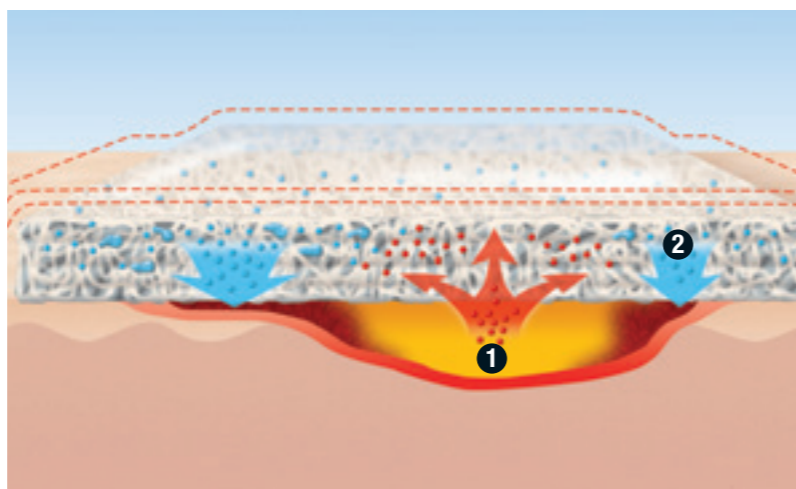




Suprasorb® X

HydroBalance Wound Dressing

- 1 Surplus exudate from the wound is absorbed by the dressing.
- 2 Moisture from the dressing is released to lightly exuding wound areas.



Suprasorb® X Natural HydroBalance. Easy. Unique!

Suprasorb® X controls the moisture content of lightly to moderately exuding wounds. With the unique structure of biosynthetic HydroBalance fibres.

Suprasorb® X is able to regulate the uptake (absorption) and release (rehydration) of moisture. According to the status of the wound, surplus exudate from the wound can be absorbed by the dressing, moisture from the dressing can be released in the case of lightly exuding wounds, or the release of moisture and absorption of exudate can take place simultaneously.

In the context of moist wound management, it is necessary to ensure that Suprasorb® X remains moist in the wound area when choosing a suitable secondary wound dressing (e.g. Suprasorb® F, Suprasorb® P and Vliwazell®).

Indications:

Wounds in all phases of wound healing which are

- lightly to moderately exuding,
- superficial and deep,
- non-infected,

for example

- pressure ulcers
- ulcers of various origins (e.g. venous, arterial)
- diabetic foot syndrome (DFS)
- second degree burns
- postoperative wounds
- skin donor and skin grafting sites



Moist wound management has never been so easy!

Regardless of which type of wound is treated with Suprasorb® X, there are numerous benefits:

- moisture regulation (HydroBalance)
- combats pain
- wide range of application
- high safety in use, usable on both sides
- particularly soft and supple

Suprasorb® X is available as dressing and as rope.

Interval between dressing changes

Depending on the degree of exudation and the secondary dressing used, at the latest after 5-7 days.

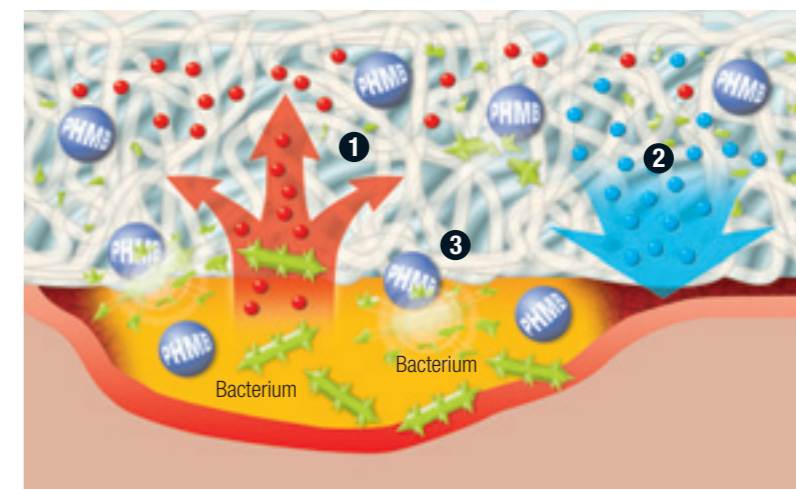


Suprasorb® X
The intelligent one
among the wound dressings.

Suprasorb® X + PHMB

Antimicrobial HydroBalance Wound Dressing

- 1 Surplus exudate from the wound is absorbed by the dressing.
- 2 Moisture from the dressing is released to lightly exuding wound areas.
- 3 Killing of microorganisms by the polyhexamethylene biguanide (PHMB) that is released.



Suprasorb® X + PHMB Natural HydroBalance. Easy. Antimicrobial!

Suprasorb® X + PHMB provides moisture regulation and additionally antimicrobial activity in lightly to moderately exuding wounds. With the unique structure of biosynthetic HydroBalance fibres plus PHMB.

In addition to the fundamental properties and advantages of Suprasorb® X, Suprasorb® X + PHMB contains 0.3% polyhexamethylene biguanide (PHMB) - a substance with proven antimicrobial activity. PHMB develops its antimicrobial potential not only within the dressing but also at the wound surface and effectively kills microorganisms such as bacteria, fungi and yeasts.

In the context of moist wound management, it is necessary to ensure that Suprasorb® X + PHMB remains moist in the wound area when choosing a suitable secondary wound dressing (e.g. Solvaline® N, Vliwazell®).

Indications:

Wounds in all phases of wound healing which are

- lightly to moderately exuding,
- superficial and deep,
- infected,

for example

- pressure ulcers
- ulcers of various origins (e.g. venous, arterial)
- diabetic foot syndrome (DFS)
- second degree burns
- postoperative wounds
- skin donor and skin grafting sites



HydroBalance also for critically colonised and infected wounds.

Regardless of which type of wound is treated with Suprasorb® X + PHMB, in addition to the properties of Suprasorb® X it has the benefits of HydroBalance fibres and PHMB:

- wide antimicrobial spectrum
- rapid effectiveness also against MRSA and VRE
- good tolerance
- high safety of use also in clinically manifest infections

Suprasorb® X + PHMB is available as dressing and as rope.

Interval between dressing changes

Depending on the degree of infection, the degree of exudation and the secondary dressing used, at the latest after 5-7 days.

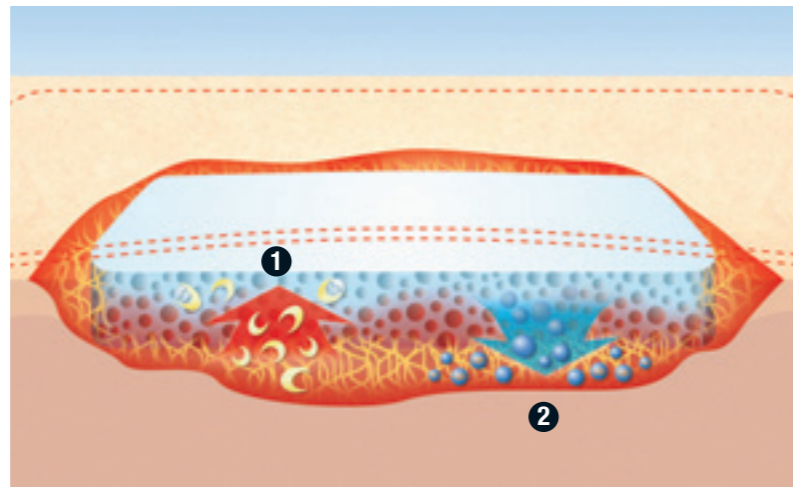




Suprasorb® C

Collagen Wound Dressing

- 1 Fast absorption of exudate and gel formation; factors inhibiting wound healing are bound within the dressing.
- 2 The incorporated collagen stimulates wound healing and protects growth factors.



Suprasorb® C

Actively promotes wound healing!

Suprasorb® C stimulates the healing process in stagnating wounds in all phases of healing. With the natural strength of an open-pore, pure collagen.

In contact with wound exudate, Suprasorb® C forms a gel and, with its pronounced pore structure, removes exudate as well as factors that inhibit healing rapidly and efficiently. In addition, the porous structure of Suprasorb® C supports physical haemostasis.

In the case of lightly exuding wounds, it is recommended to moisten Suprasorb® C with saline or Ringer solution.

Indications:

Wounds in all phases of wound healing which are

- lightly to moderately exuding,
- superficial and deep,
- non-infected,

for example

- pressure ulcers
- ulcers of various origins
- diabetic foot syndrome (DFS)
- skin donor and skin grafting sites
- postoperative wounds
- second degree burns



Bioactive in all phases of wound healing.

The porous Suprasorb® C collagen sponge supports wound healing through a series of benefits:

- binds factors that inhibit wound healing (e.g. proteases, radicals, cytokines)
- protects growth factors
- actively stimulates wound healing
- fast absorption of exudate due to pronounced porous structure

Interval between dressing changes

Depending on the degree of exudation, at the latest after 3 days.

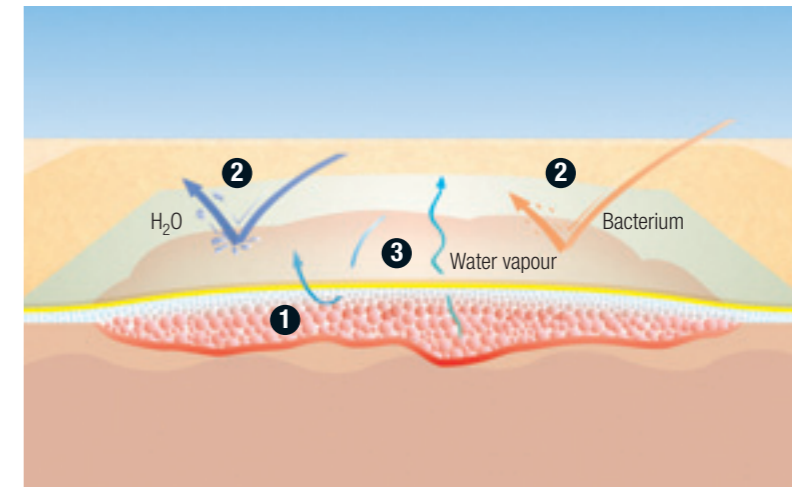


Suprasorb® C
The active one
 among the wound dressings.

Suprasorb® P

PU Foam Dressing

- 1 Fast absorption of exudate; rapid swelling leads to good contact with wound base.
- 2 Repels bacteria and fluids.
- 3 Surplus water vapour evaporates.



Suprasorb® P

Thoroughly absorbs exudate!

Suprasorb® P absorbs exudate fast and safely in moderately exuding wounds.

The foam structure prevents adhesion to the granulation tissue and the semi-permeable PU membrane ensures the maintenance of an ideal moist wound environment.

The medium-pore, semi-permeable polyurethane (PU) foam dressing has a PU membrane backing that repels water and bacteria. The self-adhesive version also has an adhesive border with a polyacrylic adhesive that is kind to the skin.

Indications:

Wounds in all phases of wound healing which are

- moderately exuding,
- superficial,
- non-infected,

for example

- pressure ulcers
- ulcers of various origins (e.g. venous, arterial)
- diabetic foot syndrome (DFS)
- skin donor and skin grafting sites
- postoperative wounds
- second degree burns

Medium-pore PU foam for excellent capillary action.

The Suprasorb® P dual-layer wound dressing offers numerous benefits:

- fast and reliable absorption of exudate
- rapid swelling leads to safe contact with the wound base
- maintains its shape also after absorption of fluid
- easy to apply
- repels bacteria and fluids, allows washing and showering
- soft and comfortable to wear

Suprasorb® P is available in three versions: non-adhesive, self-adhesive and sacrum.

Interval between dressing changes

Depending on the degree of exudation and on the primary dressing, if used, the PU foam dressing is changed when discoloration is seen on the back and when the dressing becomes deformed to a size greater than the wound. Suprasorb® P may remain in place for up to 5-7 days if the wound has been thoroughly cleaned.



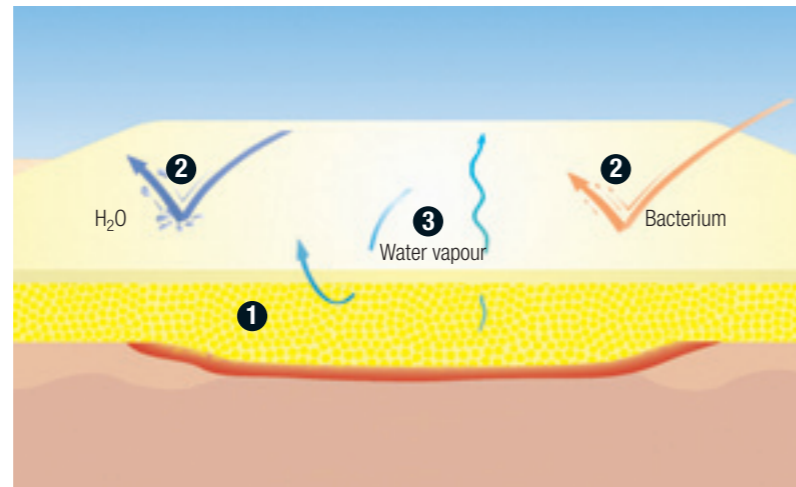
Suprasorb® P
The easy one
 among the wound dressings.



Suprasorb® H

Hydrocolloid Dressing

- 1 The hydrocolloid swells when it absorbs exudate and forms a gel that binds the exudate and detritus.
- 2 Repels bacteria and fluids.
- 3 Surplus water vapour evaporates.



Suprasorb® H Provides reliable support for wound healing!

Suprasorb® H creates an ideal moist wound environment in lightly to moderately exuding wounds. With the convincing effectiveness of a proven hydrocolloid.

The dual-layer wound dressing consists of a polyurethane film and an absorbent hydrocolloid layer.

The hydrocolloid layer, which is made up of absorbent and expandable particles, creates an ideal moist environment and stimulates granulation and epithelialisation. On contact with the wound, the exudate is absorbed. This causes the hydrocolloid to swell and to form a gel which binds exudate and detritus. This gel formation enables the dressing to mould itself excellently to the wound structure.

Indications:

Wounds in all phases of wound healing which are

- lightly (Suprasorb® H thin) and moderately exuding (Suprasorb® H standard, border, sacrum),

- superficial,
- non-infected,

for example

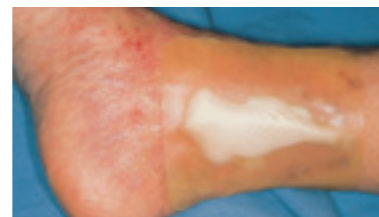
- pressure ulcers
- ulcers of various origins (e.g. venous, arterial)
- diabetic foot syndrome (DFS)
- exuding abrasions
- postoperative wounds
- second degree burns

Two layers for efficient wound healing!

The Suprasorb® H dual-layer wound dressing offers numerous benefits:

- good absorption of exudate
- good adhesive properties, which make it safe and easy to apply
- all versions are particularly thin and flexible
- repels bacteria and fluids
- allows showering and washing

Suprasorb® H thin in the 5 x 5 cm size is particularly suitable for the treatment of diabetic foot syndrome (DFS).



Suprasorb® H is available in four versions: standard, thin, sacrum and border.

Interval between dressing changes

Depending on the degree of exudation and on the primary dressing, if used, the dressing should be changed when there is pronounced bubble formation extending further than the wound area; at the latest after 5-7 days.

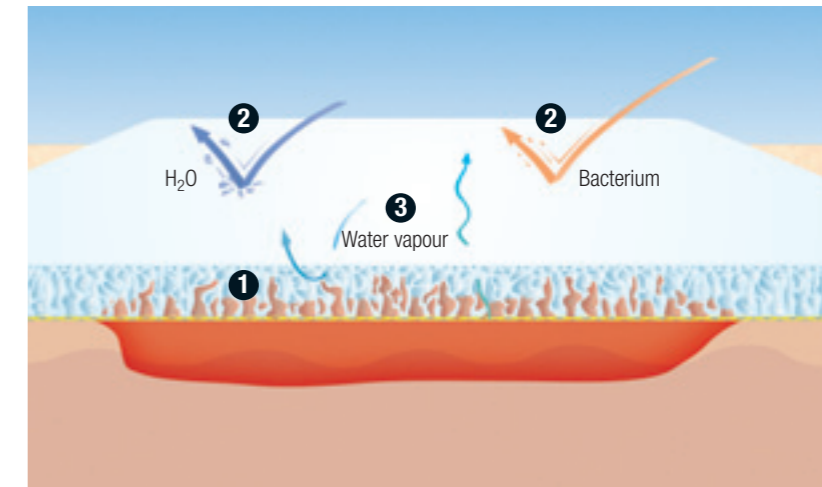


Suprasorb® H
The multi-talent
among the wound dressings.

Suprasorb® M

PU Membrane

- 1 Elastic, semi-permeable polyurethane membrane.
- 2 Repels bacteria and fluids.
- 3 Surplus water vapour evaporates.



Suprasorb® M Provides flexibility and elasticity!

Suprasorb® M is elastic and conforms well to body contours in lightly exuding wounds.

Suprasorb® M ensures the exchange of gas and heat, repels fluids and creates an ideal moist wound climate. At the same time, the dressing protects the wound from colonisation by germs from outside.

Indications:

Wounds in the granulation and epithelialisation phase which are

- lightly exuding,
- superficial,
- non-infected,

for example

- abrasions
- dermabrasion
- skin donor sites
- ulcers
- pressure ulcers
- diabetic foot syndrome (DFS)
- second degree burns



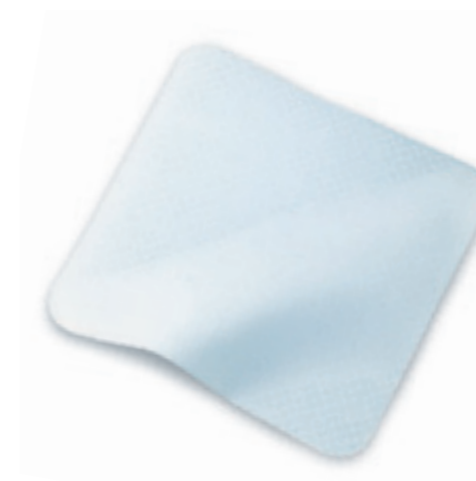
Conforms ideally to body contours.

The semi-occlusive Suprasorb® M wound dressing offers many benefits, above all in parts of the body that are difficult to dress:

- extremely flexible and elastic, conforms ideally to body contours
- protects against external influences
- comfortable to wear
- allows showering and washing
- particularly suitable for sensitive skin

Interval between dressing changes

Depending on the degree of exudation the dressing should be changed when there is pronounced discoloration on the back exceeding the wound area; at the latest after 5-7 days.



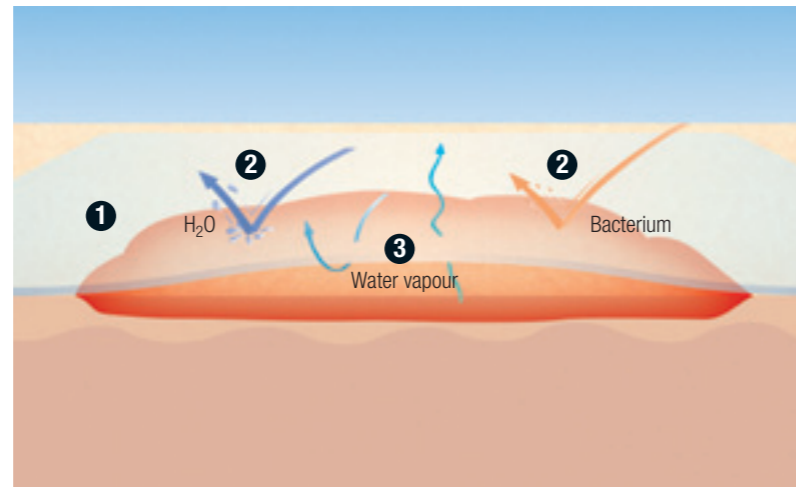
Suprasorb® M
The flexible one
among the wound dressings.



Suprasorb® F

Film Wound Dressing

- 1 Transparent, semi-permeable polyurethane film.
- 2 Repels bacteria and fluids.
- 3 Surplus water vapour evaporates.



Suprasorb® F Protects and holds (in)visibly!

Suprasorb® F offers transparent help for protection and dressing retention. With the breathability of a semi-permeable polyurethane film.

Suprasorb® F enables a moist wound climate conducive to wound healing by means of gas and heat exchange, repels fluids and protects the wound against colonisation by germs from outside.

Indications:

Wounds in the epithelialisation phase which are

- lightly exuding,
- superficial,
- non-infected,

for example

- abrasions
- dermabrasion
- skin donor sites
- ulcers
- pressure ulcers
- diabetic foot syndrome (DFS)
- second degree burns



Similar to skin and extremely fine.

The Suprasorb® F microporous film wound dressing offers a variety of "clear" benefits:

- visual wound inspection
- very easy application and use
- effective protection from external influences
- allows showering and washing
- flexible, elastic and tear-resistant

Suprasorb® F is available as a sterile film wound dressing and also as a non-sterile film dressing off the roll.

Interval between dressing changes

Depending on the degree of exudation the dressing should be changed when there is an accumulation of exudate exceeding the wound size, at the latest after 5-7 days.

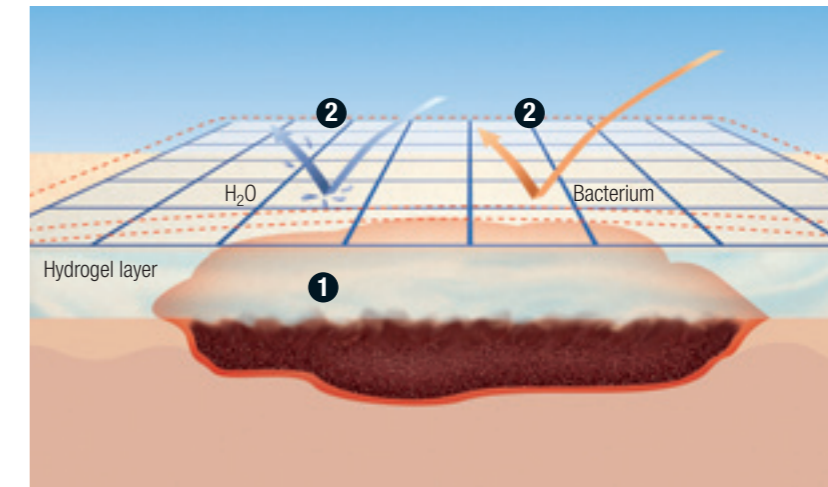


Suprasorb® F
The transparent one
among the wound dressings.

Suprasorb® G

Gel Dressings

- 1 Gentle breakdown of dry necroses by the hydrogel layer.
- 2 Semi-permeable polyurethane film that repels bacteria and fluids.



Suprasorb® G Gently promotes the autolytic process!

Suprasorb® G breaks down coatings and necrotic tissue deep in the wound base in lightly exuding and dry wounds. With the gentle strength of hydrogel; as a hydrogel layer on a PU carrier film or as an amorphous gel.

The high moisture content creates an ideal moist wound environment. Necrotic tissue and detritus are broken down and absorbed by the gel.

In the context of moist wound management, Suprasorb® G is used as a gel dressing for superficial wounds and as an amorphous gel for deep wounds.

Indications:

Wounds which are

- necrotic and lightly exuding,
- superficial (gel dressing) or deep (amorphous gel),
- non-infected,

for example

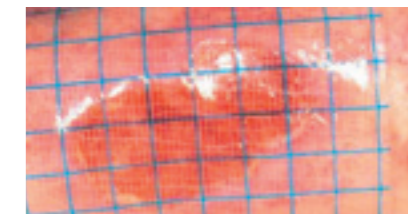
- necrotic and dry wounds of various origins
- second degree burns

Pleasant moisture and clear wound conditions.

Suprasorb® G shows its benefits both as a dressing and as a gel:

- releases moisture
- breaks down necrotic tissue without harm to healthy tissue
- user-oriented consistency
- unique application syringe
- analgesic activity by means of a subjective cooling effect
- enables monitoring of the wound

Suprasorb® G is available in two versions: as a gel dressing and as an amorphous gel.



Interval between dressing changes

When Suprasorb® G gel dressing has been used up through the absorption of exudate, it shows a slight turbidity and should be changed at that point, at the latest after 7 days of application. Suprasorb® G amorphous gel is changed at the latest after 3 days, depending on the secondary dressing. If required Suprasorb® G dressing can be cut to fit the wound size and shape.



Suprasorb® G
The moisturiser
among the wound dressings.



Suprasorb® Product Range


Suprasorb® A
Calcium Alginate Dressing

Dressing, sterile, individually sealed

Size	REF	Shipping Units
5 x 5 cm	20 440	10 pcs. / 100 pcs.
10 x 10 cm	20 441	10 pcs. / 100 pcs.
10 x 20 cm	20 442	10 pcs. / 100 pcs.

Rope, sterile, individually sealed

30 cm, 2 g	20 445	5 pcs. / 50 pcs.
------------	--------	------------------




Suprasorb® A + Ag
Antimicrobial Calcium Alginate Dressing

Dressing, sterile, individually sealed

Size	REF	Shipping Units
5 x 5 cm	20 570	10 pcs. / 100 pcs.
10 x 10 cm	20 571	10 pcs. / 50 pcs.
10 x 20 cm	20 572	5 pcs. / 20 pcs.

Rope, sterile, individually sealed

30 cm, 2 g	20 573	5 pcs. / 20 pcs.
------------	--------	------------------




Suprasorb® X
HydroBalance Wound Dressing

Dressing, sterile, individually sealed

Size	REF	Shipping Units
5 x 5 cm	20 534	5 pcs. / 90 pcs.
9 x 9 cm	20 531	5 pcs. / 80 pcs.
14 x 20 cm	20 532	5 pcs. / 65 pcs.

Rope, sterile, individually sealed

2 x 21 cm	20 533	5 pcs. / 130 pcs.
-----------	--------	-------------------



Suprasorb® X + PHMB
Antimicrobial HydroBalance Wound Dressing

Dressing, sterile, individually sealed

Size	REF	Shipping Units
5 x 5 cm	20 540	5 pcs. / 90 pcs.
9 x 9 cm	20 541	5 pcs. / 80 pcs.
14 x 20 cm	20 542	5 pcs. / 65 pcs.

Rope, sterile, individually sealed


2 x 21 cm	20 543	5 pcs. / 130 pcs.
-----------	--------	-------------------



Suprasorb® C
Collagen Wound Dressing

aseptic processing, sterile, individually sealed

Size	REF	Shipping Units
4 x 6 x 0.8 cm	20 481	5 pcs. / 225 pcs.
6 x 8 x 0.8 cm	20 482	5 pcs. / 180 pcs.
8 x 12 x 0.8 cm	20 483	5 pcs. / 90 pcs.



Suprasorb® P
PU Foam Dressing

self-adhesive, sterile, individually sealed


Size	REF	Shipping Units
7.5 x 7.5 cm	20 416	10 pcs. / 100 pcs.
10 x 10 cm	20 417	10 pcs. / 100 pcs.
15 x 15 cm	20 418	5 pcs. / 50 pcs.
15 x 20 cm	20 419	5 pcs. / 50 pcs.

non-adhesive, sterile, individually sealed

5 x 5 cm	20 405	10 pcs. / 100 pcs.
7.5 x 7.5 cm	20 406	10 pcs. / 100 pcs.
10 x 10 cm	20 407	10 pcs. / 100 pcs.
15 x 15 cm	20 408	5 pcs. / 50 pcs.
15 x 20 cm	20 409	5 pcs. / 50 pcs.

sacrum, self-adhesive, sterile, individually sealed

18 x 20.5 cm	20 415	5 pcs. / 50 pcs.
--------------	--------	------------------



Suprasorb® H
Hydrocolloid Dressing

standard, sterile, individually sealed

Size	REF	Shipping Units
10 x 10 cm	20 403	10 pcs. / 660 pcs.
15 x 15 cm	20 401	5 pcs. / 50 pcs.
20 x 20 cm	20 402	5 pcs. / 50 pcs.

thin, sterile, individually sealed


5 x 5 cm	20 424	10 pcs. / 1650 pcs.
5 x 10 cm	20 410	10 pcs. / 480 pcs.
5 x 20 cm	20 411	10 pcs. / 250 pcs.
10 x 10 cm	20 412	10 pcs. / 720 pcs.
15 x 15 cm	20 413	5 pcs. / 50 pcs.
20 x 20 cm	20 414	5 pcs. / 50 pcs.

sacrum, sterile, individually sealed

14 x 16 cm	20 430	5 pcs. / 200 pcs.
------------	--------	-------------------

border, sterile, individually sealed


14 x 14 cm	20 420	5 pcs. / 200 pcs.
------------	--------	-------------------



Suprasorb® M
PU Membrane

sterile, individually sealed


Size	REF	Shipping Units
10 x 10 cm	20 450	5 pcs. / 250 pcs.
10 x 20 cm	20 451	5 pcs. / 140 pcs.
20 x 20 cm	20 452	5 pcs. / 110 pcs.



Suprasorb® F
Film Wound Dressing

sterile, individually sealed


Size	REF	Shipping Units
5 x 7 cm	20 460	10 pcs. / 380 pcs.
5 x 7 cm	20 461	100 pcs. / 1000 pcs.
10 x 12 cm	20 462	10 pcs. / 100 pcs.
10 x 12 cm	20 463	50 pcs. / 200 pcs.
10 x 25 cm	20 464	10 pcs. / 140 pcs.
15 x 20 cm	20 465	10 pcs. / 400 pcs.
20 x 30 cm	20 466	10 pcs. / 180 pcs.



Suprasorb® F
Film Dressing

off the roll, non-sterile

Size	REF	Shipping Units
10 cm x 1 m	20 467	1 pc. / 16 pcs.
10 cm x 10 m	20 468	1 pc. / 16 pcs.
15 cm x 10 m	20 469	1 pc. / 10 pcs.




Suprasorb® G
Amorphous Gel

in application syringe, sterile

Size	REF	Shipping Units
6g	20 478	10 pcs. / 500 pcs.
20g	20 479	10 pcs. / 240 pcs.

Gel Dressing
sterile, individually sealed

5 x 7.5 cm	20 470	5 pcs. / 25 pcs.
10 x 10 cm	20 471	5 pcs. / 25 pcs.
20 x 20 cm	20 472	3 pcs. / 15 pcs.



Suprasorb® A
Calcium Alginate Dressing

Dressing, sterile, individually sealed

Size	REF	Shipping Units
5 x 5 cm	20 440	10 pcs. / 100 pcs.
10 x 10 cm	20 441	10 pcs. / 100 pcs.
10 x 20 cm	20 442	10 pcs. / 100 pcs.

Rope, sterile, individually sealed

30 cm, 2 g	20 445	5 pcs. / 50 pcs.
------------	--------	------------------

Suprasorb® A + Ag
Antimicrobial Calcium Alginate Dressing

Dressing, sterile, individually sealed

Size	REF	Shipping Units
5 x 5 cm	20 570	10 pcs. / 100 pcs.
10 x 10 cm	20 571	10 pcs. / 50 pcs.
10 x 20 cm	20 572	5 pcs. / 20 pcs.

Rope, sterile, individually sealed

30 cm, 2 g	20 573	5 pcs. / 20 pcs.
------------	--------	------------------

Suprasorb® X
HydroBalance Wound Dressing

Dressing, sterile, individually sealed

Size	REF	Shipping Units
5 x 5 cm	20 534	5 pcs. / 90 pcs.
9 x 9 cm	20 531	5 pcs. / 80 pcs.
14 x 20 cm	20 532	5 pcs. / 65 pcs.

Rope, sterile, individually sealed

2 x 21 cm	20 533	5 pcs. / 130 pcs.
-----------	--------	-------------------

Suprasorb® X + PHMB
Antimicrobial HydroBalance Wound Dressing

Dressing, sterile, individually sealed

Size	REF	Shipping Units
5 x 5 cm	20 540	5 pcs. / 90 pcs.
9 x 9 cm	20 541	5 pcs. / 80 pcs.
14 x 20 cm	20 542	5 pcs. / 65 pcs.

Rope, sterile, individually sealed

2 x 21 cm	20 543	5 pcs. / 130 pcs.
-----------	--------	-------------------

Suprasorb® C
Collagen Wound Dressing

aseptic processing, sterile, individually sealed

Size	REF	Shipping Units
4 x 6 x 0.8 cm	20 481	5 pcs. / 225 pcs.
6 x 8 x 0.8 cm	20 482	5 pcs. / 180 pcs.
8 x 12 x 0.8 cm	20 483	5 pcs. / 90 pcs.

Suprasorb® P
PU Foam Dressing

self-adhesive, sterile, individually sealed

Size	REF	Shipping Units
7.5 x 7.5 cm	20 416	10 pcs. / 100 pcs.
10 x 10 cm	20 417	10 pcs. / 100 pcs.
15 x 15 cm	20 418	5 pcs. / 50 pcs.
15 x 20 cm	20 419	5 pcs. / 50 pcs.

non-adhesive, sterile, individually sealed

5 x 5 cm	20 405	10 pcs. / 100 pcs.
7.5 x 7.5 cm	20 406	10 pcs. / 100 pcs.
10 x 10 cm	20 407	10 pcs. / 100 pcs.
15 x 15 cm	20 408	5 pcs. / 50 pcs.
15 x 20 cm	20 409	5 pcs. / 50 pcs.

sacrum, self-adhesive, sterile, individually sealed

18 x 20.5 cm	20 415	5 pcs. / 50 pcs.
--------------	--------	------------------

Suprasorb® H
Hydrocolloid Dressing

standard, sterile, individually sealed

Size	REF	Shipping Units
10 x 10 cm	20 403	10 pcs. / 660 pcs.
15 x 15 cm	20 401	5 pcs. / 50 pcs.
20 x 20 cm	20 402	5 pcs. / 50 pcs.

thin, sterile, individually sealed

5 x 5 cm	20 424	10 pcs. / 1650 pcs.
5 x 10 cm	20 410	10 pcs. / 480 pcs.
5 x 20 cm	20 411	10 pcs. / 250 pcs.
10 x 10 cm	20 412	10 pcs. / 720 pcs.
15 x 15 cm	20 413	5 pcs. / 50 pcs.
20 x 20 cm	20 414	5 pcs. / 50 pcs.

sacrum, sterile, individually sealed

14 x 16 cm	20 430	5 pcs. / 200 pcs.
------------	--------	-------------------

border, sterile, individually sealed

14 x 14 cm	20 420	5 pcs. / 200 pcs.
------------	--------	-------------------

Suprasorb® M
PU Membrane

sterile, individually sealed

Size	REF	Shipping Units
10 x 10 cm	20 450	5 pcs. / 250 pcs.
10 x 20 cm	20 451	5 pcs. / 140 pcs.
20 x 20 cm	20 452	5 pcs. / 110 pcs.

Suprasorb® F
Film Wound Dressing

sterile, individually sealed

Size	REF	Shipping Units
5 x 7 cm	20 460	10 pcs. / 380 pcs.
5 x 7 cm	20 461	100 pcs. / 1000 pcs.
10 x 12 cm	20 462	10 pcs. / 100 pcs.
10 x 12 cm	20 463	50 pcs. / 200 pcs.
10 x 25 cm	20 464	10 pcs. / 140 pcs.
15 x 20 cm	20 465	10 pcs. / 400 pcs.
20 x 30 cm	20 466	10 pcs. / 180 pcs.

Film Dressing
off the roll, non-sterile

Size	REF	Shipping Units
10 cm x 1 m	20 467	1 pc. / 16 pcs.
10 cm x 10 m	20 468	1 pc. / 16 pcs.
15 cm x 10 m	20 469	1 pc. / 10 pcs.

Suprasorb® G
Amorphous Gel

in application syringe, sterile

Size	REF	Shipping Units
6g	20 478	10 pcs. / 500 pcs.
20g	20 479	10 pcs. / 240 pcs.

Gel Dressing
sterile, individually sealed

5 x 7.5 cm	20 470	5 pcs. / 25 pcs.
10 x 10 cm	20 471	5 pcs. / 25 pcs.
20 x 20 cm	20 472	3 pcs. / 15 pcs.

