



Merit Advance[®]

Needles

THE POINT OF INNOVATION™

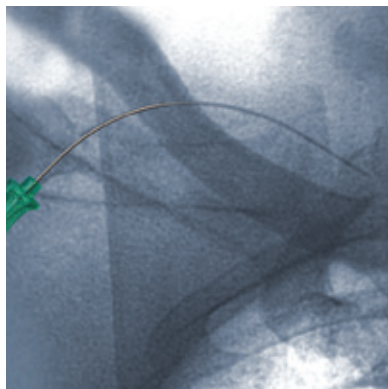
Begins with Merit's Needles and ends
with exceptional clinical performance

ADVANCING NEEDLE DESIGNS WITH THE HIGHEST STANDARDS YOU'VE COME TO EXPECT

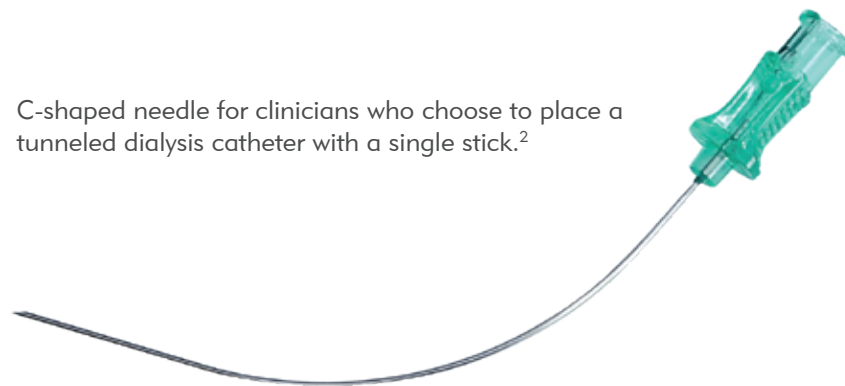
Merit Advance needles combine an ergonomic hub, coated stainless steel and tip sharpness with top clinical performance. Our Majestik[®] 2 and 3 part needles offered in standard, Seldinger or Courmand shields incorporate a blunt cannula with a solid or hollow cutting stylet. When clinician safety matters, choose our Advance safety needle.

BENEFITS

- Unique hub design with ergonomic feel and reference point to orient bevel.
- Increased sharpness to facilitate entry into tissue and vessel walls.
- Designed for smooth guide wire insertion and removal of the needle over the wire.
- 18G needles have approximately 25% less drag than leading competitor.¹



C-shaped needle for clinicians who choose to place a tunneled dialysis catheter with a single stick.²



¹ Data on file.

² Contractor SG, Phatak TD, Bhagat N. DeNovo Placement of a Tunneled Dialysis Catheter over a wire with the single-incision technique. *J Vasc Interv Radiol* 2008; 19:1255-1259.



Merit Advance®
Needle

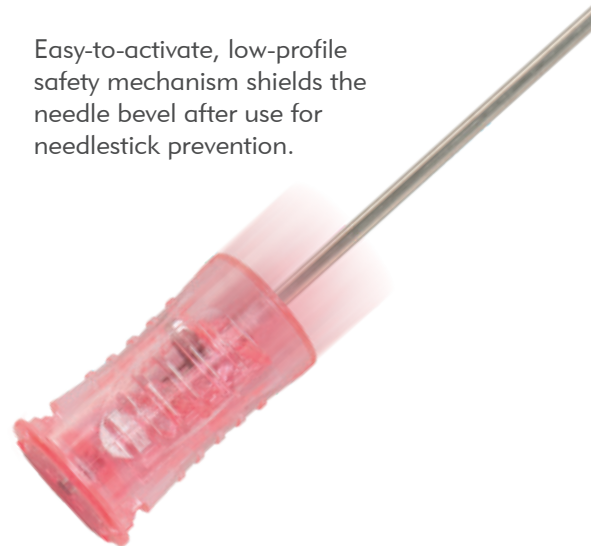
Ergonomic hub with reference point to orient bevel. Smooth guide wire insertion and removal over the wire.

MajeSTIK®
Needle

Sharp grind angle facilitates entry into tissue and vessel wall. Blunt-end obturator occludes the cannula lumen.

Merit Advance®
Safety Needle

Easy-to-activate, low-profile safety mechanism shields the needle bevel after use for needlestick prevention.



ORDERING INFORMATION

MERIT ADVANCED NEEDLE

Product Number	Gauge	Wall Thickness	Accepts Wire	Length	Length	Finish
----------------	-------	----------------	--------------	--------	--------	--------

ONE-WALL NEEDLE: COLORED HUB

AD18T51W	18	Thin	0.038" (0.97 mm)	5.0 cm	2"	Smooth
AD18T71W	18	Thin	0.038" (0.97 mm)	7.0 cm	2¾"	Smooth
AD18T71W-E	18	Thin	0.038" (0.97 mm)	7.0 cm	2¾"	Echo
AD18N91W	18	Normal	0.038" (0.97 mm)	9.0 cm	3½"	Smooth
AD19U41W	19	Ultra	0.035" (0.89 mm)	4.0 cm	1½"	Smooth
AD19U51W	19	Ultra	0.035" (0.89 mm)	5.0 cm	2"	Smooth
AD19U71W	19	Ultra	0.035" (0.89 mm)	7.0 cm	2¾"	Smooth
AD20T41W	20	Thin	0.025" (0.64 mm)	4.0 cm	1½"	Smooth
AD20T71W	20	Thin	0.025" (0.64 mm)	7.0 cm	2¾"	Smooth
AD21T21W	21	Thin	0.021" (0.53 mm)	2.0 cm	1"	Smooth
AD21T41W	21	Thin	0.021" (0.53 mm)	4.0 cm	1½"	Smooth
AD21T41W-E	21	Thin	0.021" (0.53 mm)	4.0 cm	1½"	Echo
AD21T71W	21	Thin	0.021" (0.53 mm)	7.0 cm	2¾"	Smooth
AD21T71W-E	21	Thin	0.021" (0.53 mm)	7.0 cm	2¾"	Echo
AD21T91W	21	Thin	0.021" (0.53 mm)	9.0 cm	3½"	Smooth
AD21T91W-E	21	Thin	0.021" (0.53 mm)	9.0 cm	3½"	Echo

ONE-WALL NEEDLE: CLEAR HUB

AD21T21WT	21	Thin	0.021" (0.53 mm)	2.5 cm	1"	Smooth
AD21T41WT	21	Thin	0.021" (0.53 mm)	4.0 cm	1½"	Smooth
AD21T41WT-E	21	Thin	0.021" (0.53 mm)	4.0 cm	1½"	Echo
AD21T71WT	21	Thin	0.021" (0.53 mm)	7.0 cm	2¾"	Smooth
AD21T71WT-E	21	Thin	0.021" (0.53 mm)	7.0 cm	2¾"	Echo
AD18T71WT	18	Thin	0.038" (0.97 mm)	7.0 cm	2¾"	Smooth
AD21T91WT	21	Thin	0.021" (0.53 mm)	9.0 cm	3½"	Smooth
AD21T91WT-E	21	Thin	0.021" (0.53 mm)	9.0 cm	3½"	Echo

ONE-WALL NEEDLE WITH SELDINGER SHIELD

AD18T51WS	18	Thin	0.038" (0.97 mm)	5.0 cm	2"	Smooth
AD18T71WS	18	Thin	0.038" (0.97 mm)	7.0 cm	2¾"	Smooth
AD19U71WS	19	Ultra	0.035" (0.89 mm)	7.0 cm	2¾"	Smooth

ONE-WALL NEEDLE WITH COURNAUD SHIELD

AD18T71WC	18	Thin	0.038" (0.97 mm)	7.0 cm	2¾"	Smooth
AD19U41WC	19	ultra	0.035" (0.89 mm)	4.0 cm	1½"	Smooth
AD19U71WC	19	ultra	0.035" (0.89 mm)	7.0 cm	2¾"	Smooth
AD21T41WC	21	Thin	0.021" (0.53 mm)	4.0 cm	1½"	Smooth

CURVED ONE-WALL NEEDLE

AD21T91R*	21	Thin	0.021" (0.53 mm)	9.0 cm	3½"	Smooth
AD21T91RE*	21	Thin	0.021" (0.53 mm)	9.0 cm	3½"	Echo

All needles are packaged 25 per box (4 boxes per case).

* Curved needles are packaged 10 per box.

MAJESTIK NEEDLE

Product Number	Gauge	Wall Thickness	Accepts Wire	Length	Length	# of Parts
----------------	-------	----------------	--------------	--------	--------	------------

COURNAUD STYLE NEEDLE

AN18T52C	18	Thin	0.038" (0.97 mm)	5.1 cm	2"	2
AN18T53CO	18	Thin	0.038" (0.97 mm)	5.1 cm	2"	3

MODIFIED COURNAUD STYLE NEEDLE

AN18T53MCO	18	Thin	0.038" (0.97 mm)	5.1 cm	2"	3
AN18T52MC	18	Thin	0.038" (0.97 mm)	5.1 cm	2"	2
AN18T72MC	18	Thin	0.038" (0.97 mm)	7.0 cm	2¾"	2
AN19U52MC	19	Ultra	0.035" (0.89 mm)	5.1 cm	2"	2

SELDINGER STYLE NEEDLE

AN18T73SO	18	Thin	0.038" (0.97 mm)	7.0 cm	2¾"	3
AN18T72S-25	18	Thin	0.038" (0.97 mm)	7.0 cm	2¾"	2
AN19U72S-25	19	Ultra	0.035" (0.89 mm)	7.0 cm	2¾"	2

SELDINGER NEEDLE WITH HOLLOW STYLET

AN18T53SHO	18	Thin	0.038" (0.97 mm)	5.1 cm	2"	3
AN18T73SHO	18	Thin	0.038" (0.97 mm)	7.0 cm	2¾"	3
AN18T72SH	18	Thin	0.038" (0.97 mm)	7.0 cm	2¾"	2

SELDINGER STYLE NEEDLE WITH COURNAUD SHIELD

AN18T72SC	18	Thin	0.038" (0.97 mm)	7.0 cm	2¾"	2
-----------	----	------	------------------	--------	-----	---

Packaged 25 per box (4 boxes per case).

MERIT ADVANCED SAFETY NEEDLE

Product Number	Gauge	Wings	Accepts Wire	Length	Length
SL18T71W	18	no	0.038" (0.97 mm)	7.0 cm	2¾"
SL18T71WS	18	yes	0.038" (0.97 mm)	7.0 cm	2¾"
SL21T71W	21	no	0.021" (0.53 mm)	7.0 cm	2¾"
SL21T71WS	21	yes	0.021" (0.53 mm)	7.0 cm	2¾"

Packaged 25 per box (4 boxes per case).

Before using refer to Instructions for Use for indications, contraindications, warnings, precautions, and directions for use.



Understand. Innovate. Deliver.™

merit.com

Merit Medical Systems, Inc.
1600 West Merit Parkway
South Jordan, Utah 84095
1.801.253.1600
1.800.35.MERIT

Merit Medical Europe, Middle
East & Africa (EMEA)
Amerikalaan 42, 6199 AE
Maastricht-Airport
The Netherlands
+31 43 358 82 22

Merit Medical Ireland Ltd.
Parkmore Business Park West
Galway, Ireland
+353 (0) 91 703 733